

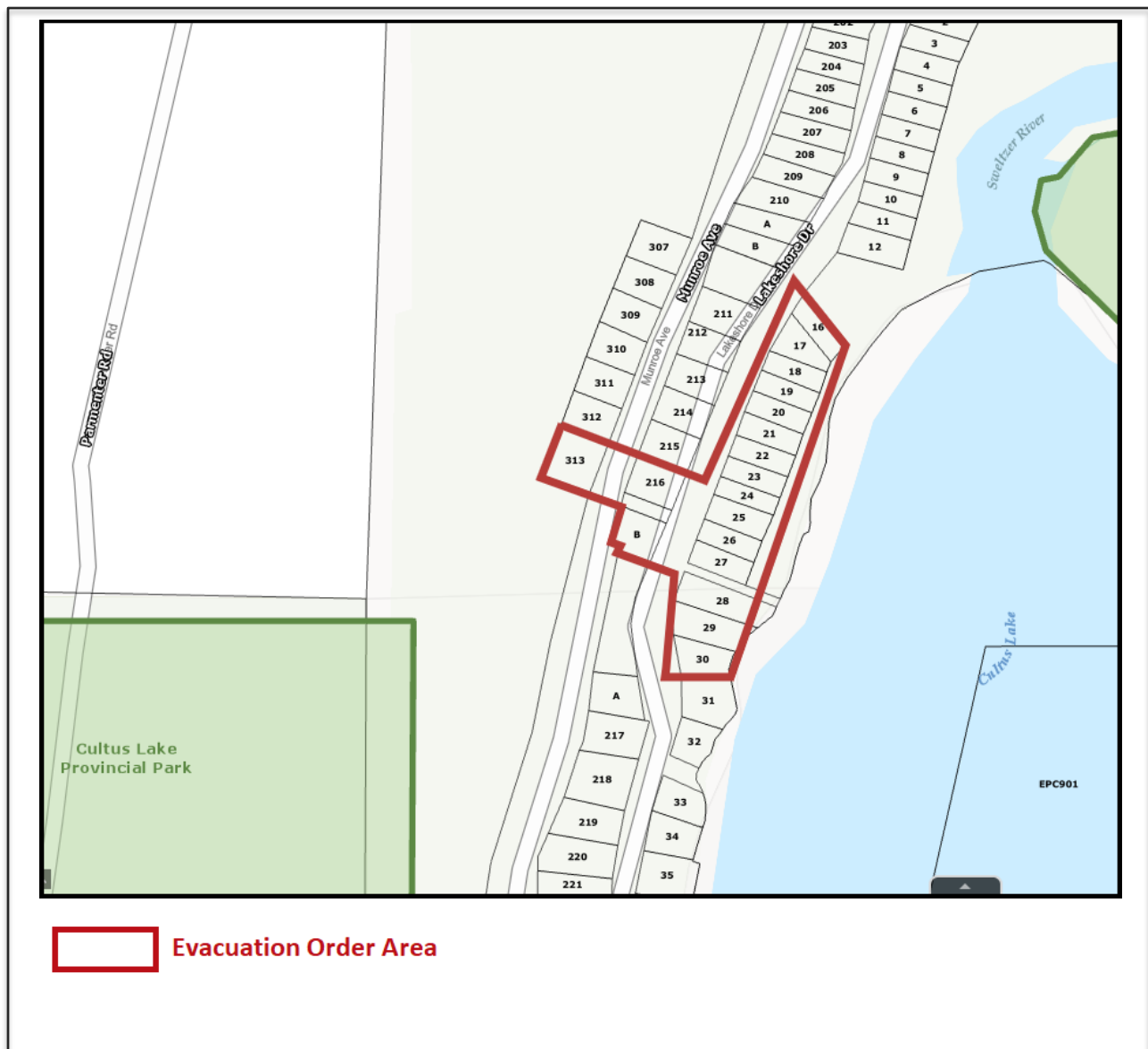
EVACUATION ORDER

November 15, 2021 at 5:30 PM

Cultus Lake, FVRD Electoral Area H

Pursuant to the BC Emergency Program Act, an **Evacuation Order** has been issued by the Fraser Valley Regional District (FVRD) due to immediate danger to life safety and health because of the atmospheric river event and heavy rainfall causing overland flooding and mudslides. Members of the Royal Canadian Mounted Police (RCMP) and other applicable agencies will be expediting this action.

This ORDER applies to the properties in FVRD Area H as shown in red on the map:



16 Lakeshore Drive
19 Lakeshore Drive
22 Lakeshore Drive
25 Lakeshore Drive
28 Lakeshore Drive
216 Lakeshore Drive

17 Lakeshore Drive
20 Lakeshore Drive
23 Lakeshore Drive
26 Lakeshore Drive
29 Lakeshore Drive
216B Lakeshore Drive

18 Lakeshore Drive
21 Lakeshore Drive
24 Lakeshore Drive
27 Lakeshore Drive
30 Lakeshore Drive
313 Munroe Avenue

WHAT YOU NEED TO DO NOW

You must leave the evacuation area immediately.

- » Be ready with 72 hour emergency supply
- » Close all windows and doors
- » Shut off gas and electrical appliances. Leave your refrigerators and freezers on.
- » Close gates and latch but do not lock
- » Gather your family; assist a neighbour or someone else who needs help
- » Take critical items if they are immediately available (medicine, ID, cash/cards, keys)
- » Take pets in kennels or on leashes. (Keep tropical pets in their cages and containers).
- » Do not use more vehicles than you have to.
- » Do not use the telephone unless you need emergency service (text family and friends or post on your social media)
- » Register with Emergency Support Services (ESS) to report that you have safely left the area.
- » Tune in to local radio stations

IF YOU CANNOT SELF-TRANSPORT AND ALL NEIGHBOURS HAVE LEFT THE AREA IMMEDIATELY CALL:

FVRD Emergency Operations Centre: 604-845-8873 or 911

Evacuee Support Services:

Egress routes out of Cultus Lake are closed at this time until further notice from the Ministry of Transportation. Please contact your neighbours to arrange for alternative accommodations. ESS will be made available on a case-by-case basis for emergency shelter and food for residents who do not have a secondary residence to return to. If this applies to you, please advise the FVRD Emergency Operations Centre that you have self-registered as an evacuee. A needs assessment will be performed to connect you with appropriate critically needed evacuee supports.

Further information will be issued as it becomes available. Please visit FVRD's EOC web page www.fvrd.ca/EOC or on Facebook and Twitter (@FraserValleyRD).



Chair Jason Lum
Fraser Valley Regional District